

N 1/4 COR SEC 21  
T18N, R64W

062623

P-10"

RECEIVED  
LARAMIE COUNTY  
CHEYENNE, WY.

CERTIFIED LAND CORNER RECORDATION

OCT 5 PM 3 00

DESCRIPTION OF CORNER EVIDENCE FOUND, AND ORIGINAL RECORD (If known)

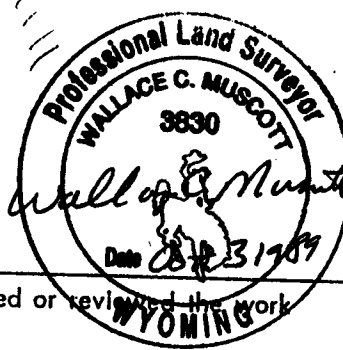
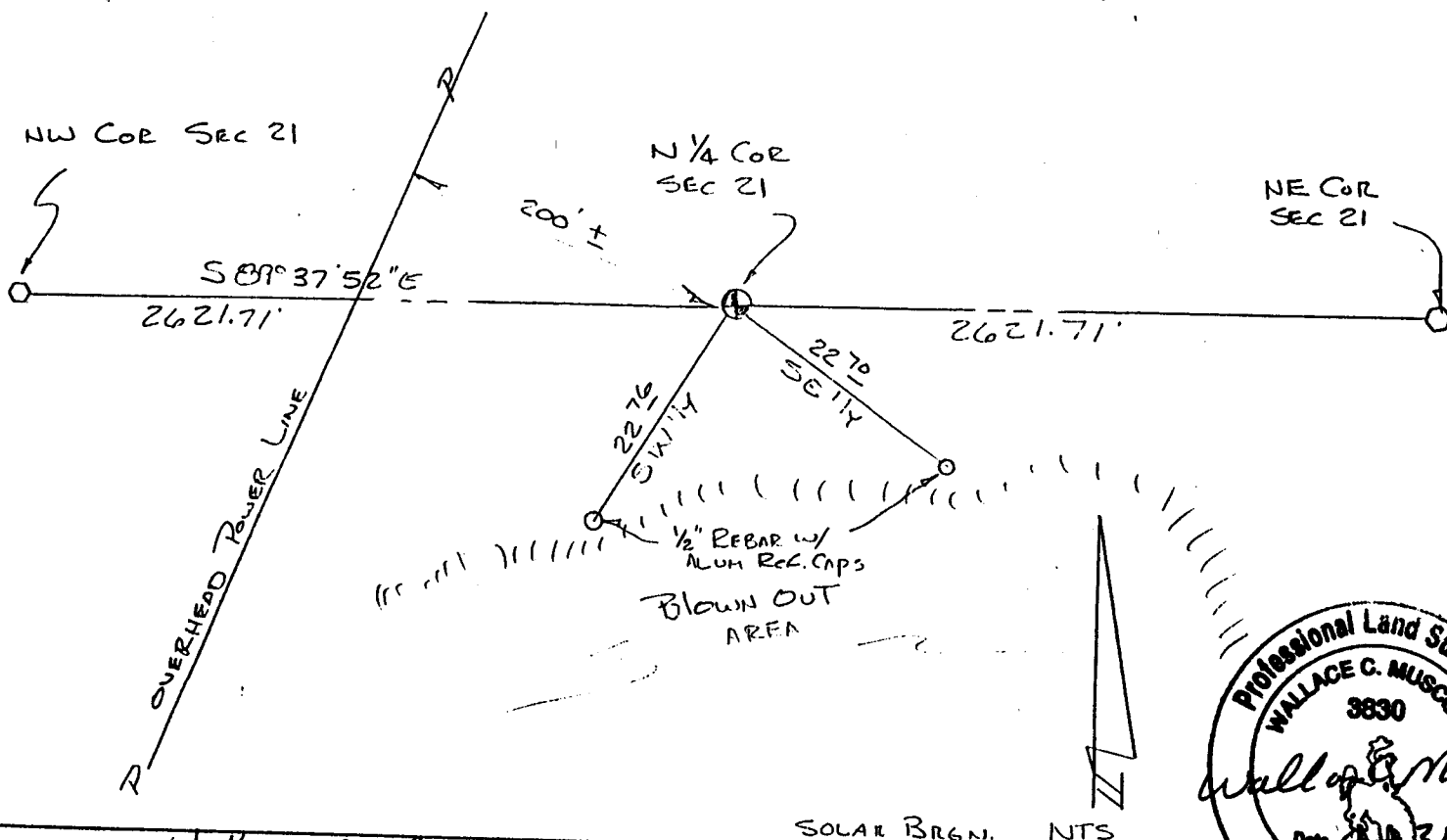
FOUND NO EVIDENCE OF ORIGINAL CORNER OR OTHERWISE.  
FALLS IN A BLOW SAND AREA. ORIGINAL BLM CALL FOR A  
16X12X6 GRANITE. CALLED THE CORNER LOST, SET BY SINGLE  
PRO-RATE METHOD.

DESCRIPTION OF MONUMENT AND ACCESSORIES ESTABLISHED  
TO PERPETUATE THE ORIGINAL LOCATION OF THIS CORNER:

AT THE CALCULATED POINT FOR THIS CORNER, SET A 5/8" X 30" REBAR  
WITH A CORPS OF ENGINEERS BRASS CAP ON TOP & RAISED A MOUND  
OF STONE. REFERENCED AS SHOWN BELOW.

Aug. 24 1989

SKETCH, WITH COURSE AND DISTANCE TO ADJACENT CORNER IF DETERMINED IN THIS SURVEY.  
(May Sketch or Paste Reproduction on Reverse Side.)



I, Wallace C. Muscott

SOLAR BRGN. NTS

certify that I have carefully performed or reviewed the work  
done on the diagrammed corner as reported on this recordation form and approve the same.

Wallace C. Muscott  
Signature of Surveyor

3830  
Registration No.

STATE OF WYOMING,  
Office of Clerk and Recorder,  
County of \_\_\_\_\_

This "corner record" was filed for record on the \_\_\_\_\_ day of \_\_\_\_\_, 19\_\_\_\_, was noted  
on the cross-index plat and is assigned page No. \_\_\_\_\_, in book No. \_\_\_\_\_.

County Official			
Cross Index No. <u>N-11</u>	T. <u>18N</u>	R. <u>64W</u>	Mer.
_____	T. _____	R. _____	Mer.
_____	T. _____	R. _____	Mer.
_____	T. _____	R. _____	Mer.
_____	T. _____	R. _____	Mer.
_____	T. _____	R. _____	Mer.
_____	T. _____	R. _____	Mer.